

FLATBED CUTTER SERIES

FCX4000

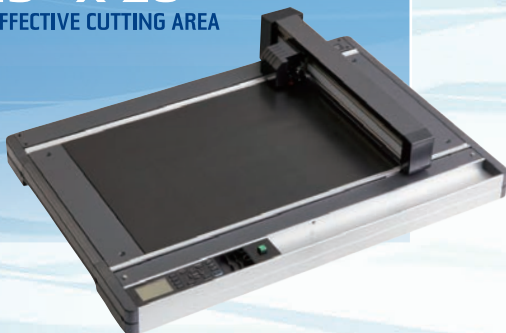


STAND
OPTIONAL

 **VIDEO TRAINING**
PRESS PLAY ► GET TO WORK

HIGH PRECISION CUT AND CREASE ON DEMAND

FCX4000-50ES
ELECTRO-STATIC HOLD DOWN
19" x 26"
EFFECTIVE CUTTING AREA



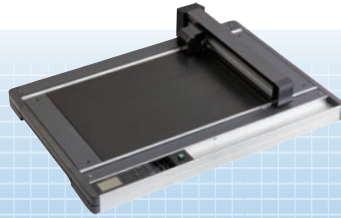
FCX4000-60ES
ELECTRO-STATIC HOLD DOWN
26" x 38"
EFFECTIVE CUTTING AREA



STAND
OPTIONAL

FCX4000 SPECIFICATIONS

GRAPHTEC
PRECISION CUTTING SOLUTIONS



STAND OPTIONAL

MODEL : **FCX4000-50ES**

FCX4000-60ES

Cutting Area :	19" x 26"	26" x 38"
Media Hold-Down :	Electro-static Panel	
Mountable Media Width :	27.97" (Y-axis)	21.10" (Y-axis)
Maximum Cutting Speed :	30"/s (1 to 75 cm/s in 23 steps)	
Cutting Force :	600gf - Tool 1 600gf - Tool 2	
Numbers Of Tools :	2 Tools	
Bar Code Data Management :	YES	
Offline Output Function :	USB - 64 Files	
Minimum Character Size :	Approx. 10mm (depending on font and material used)	
Mechanical Resolution :	0.005 mm (5µm)	
Interface :	Ethernet (10BASE - T/100BASE-TX) USB 2.0 High Speed Serial RS-232C	
Command Modes :	GP-GL™ HP-GL Emulation (selected by menu or automatically by received data)	
ARMS System :	Advanced Registration Mark Sensing System 6.0 • Reverse-side Cutting & Creasing Copy Function • Creasing Function • Repeat Cut Function	
Programmable Resolution :	GP-GL™ Mode: 0.1 / 0.05 / 0.025 / 0.01 mm • HP-GL®: 0.025 mm	
Unit Dimensions : <i>Dimensions with Stand</i>	w 42.87" x d 35.31" x h 8.03"	w 55.31" x d 42.08" x h 8.03" w 55.31" x d 43.2" x h 35.3"
Weight / with Stand :	64 lbs	82 lbs / 121 lbs
Compatible Media :	Marking Film (Vinyl, Fluorescent and Reflective) • Rigid Paper • Card Stock up to 1.0 mm Sandblast Rubber up to 1.0 mm • Magnet • Micro Flute Board (F/G Grades) • Gaskets Polycarbonate Plastic Sheets • High-intensity Prismatic Film • Polystyrene Foam Sheets	



GRAPHTEC STANDARD WARRANTY: 2 YEARS PARTS & LABOR WITH ONLINE PRODUCT REGISTRATION

Software :	Cutting Master 5 - Plugin Adobe Illustrator - Mac/ Win CorelDraw - Win	Graphtec Studio 2 Win/Mac Software	Windows Driver AutoCad / Vector Drawing Software Requiring a Driver
-------------------	---	--	--



www.graphtecamerica.com/videos

Graphtec Video Training is a comprehensive series of instructional videos that are key to fully understanding the capabilities of the **FCX4000 Series**. **Advanced Features** and **Optional Accessories** are also demonstrated in depth, so you can be fully trained and ready to boost productivity by mastering all the features and utilizing the full potential of this versatile flatbed cutter.

 **Lindenmeyr Munroe**

For more information, please contact your local Lindenmeyr Munroe sales representative.

LindenmeyrMunroe.com