

# HP Latex Plus Cutting Solutions

Grow your business by enhancing your HP Latex printer with our unique print AND cut workflow<sup>1</sup>



HP FlexiPRINT and CUT RIP

## Complete HP solution— outstanding print and cut

- Cut full bleed stickers that don't curl when printed with HP Latex Technology.
- Enjoy fast, accurate cutting and downforce up to 600 grams.
- HP FlexiPRINT and CUT RIP includes True Shape Nesting—automatically save up to 50% more media.<sup>2</sup>
- HP Applications Center design tools are included, for easy creation of new applications in just 3 steps.<sup>3</sup>

## Up to 50% time savings with true print AND cut<sup>4</sup>

- Print AND cut at the same time—versus print OR cut integrated devices—with our reliable, dual-device solution.
- Cut right away when printing with HP Latex Technology—with no degas time, you can deliver same day.
- Quickly deliver short-term print and cut jobs, with no need to laminate scratch-resistant HP Latex prints.<sup>5</sup>

## Easy and reliable workflow

- Print/cut in a few steps—add cut lines from the RIP, select cutting presets, and easily send to production.
- Accurate job recognition and error-free cutting with HP Barcode and Optical Position System configurations.
- Easy-to-use cutter with a simple touchscreen interface and media basket.

For more information, please visit  
[hp.com/go/latex-cutting-solutions](https://hp.com/go/latex-cutting-solutions)

Join the community, find tools, and talk to experts.  
Visit the HP Latex Knowledge Center at

[hp.com/communities/LKC](https://hp.com/communities/LKC)

<sup>1</sup> Each HP Latex Plus Cutting Solution can be directly connected to HP Latex 100, 300, 500 and 700 Printer Series. In order to connect with HP Latex 800 Printer Series an upgrade of HP FlexiPRINT and CUT RIP is needed.

<sup>2</sup> Compared to printing without nesting. Based on performance demonstration by HP, September 2020.

<sup>3</sup> Requires an HP Applications Center account, Internet connection, and connected Internet-capable device. For more information, see [www.hpapplicationscenter.com](https://www.hpapplicationscenter.com).

<sup>4</sup> Based on internal HP testing, September 2020, comparing the HP Latex Print and Cut Plus Solution with integrated print and cut solutions at a comparable cost. An integrated printer/cutter device is a large-format printer that has a contour cutter embedded in the same printer that prints the media, then moves the media backwards to cut the printed output.

<sup>5</sup> Scratch-resistance comparison based on testing third-generation HP Latex Inks and representative hard-solvent inks on self-adhesive vinyl and PVC banner. HP image permanence estimates by HP Image Permanence Lab. Outdoor display permanence tested according to SAE J2527 on a range of media, including HP media; in a vertical display orientation in simulated nominal outdoor display conditions for select high and low climates, including exposure to direct sunlight and water; performance may vary as environmental conditions change.

# Help me choose



|  | HP Latex 54 Basic Plus Cutting Solution  | HP Latex 54 Plus Cutting Solution                      | HP Latex 64 Plus Cutting Solution                                 |
|--|--|--|---|
| Product                                  | 9TL93A   | 9TL92A   | 9TL91A  |
| Description                              | Start with this easy and affordable 54-inch cutting solution   | Grow with this 54-inch business-ready cutting solution | Expand into wider applications with this 64-inch cutting solution |
| Maximum cut width                        | 135 cm (53.1 in) Only for standard media sizes   | 135 cm (53.1 in)                                       | 158 cm (62.2 in)  |
| Maximum acceleration                     | Up to 3G   |  |   |
| Maximum cut speed                        | Up to 113 cm/sec (44 in/sec) diagonal  |  |   |
| Accuracy                                 | 0.2% of movement or 0.25 mm, (0.01 in) whichever is greater  |  |   |
| Cute force                               | 0 to 400 grams of downforce, in 5-gram steps   | 0 to 600 grams of downforce, in 5-gram steps           |   |
| Cut thickness                            | 0.05 to 0.25 mm (0.002 to 0.01 in); 0.8 mm (0.03 in) with optional sandblast blade   |  |   |
| Connectivity (standard interfaces)       | USB and Ethernet (LAN)   |  |   |
| Cutter dimensions (w x d x h)            | 1765 x 704 x 1112 mm (69.5 x 27.7 x 43.8 in)   | 1765 x 704 x 1112 mm (69.5 x 27.7 x 43.8 in)           | 1960 x 704 x 1112 mm (77.2 x 27.7 x 43.8 in)                      |
| Cutter (shipping) dimensions (w x d x h) | 2230 x 420 x 710 mm (87.8 x 16.5 x 28 in)  | 2230 x 420 x 710 mm (87.8 x 16.5 x 28 in)              | 2230 x 420 x 710 mm (87.8 x 16.5 x 28 in)                         |
| Cutter weight                            | 43.5 kg (96 lb)  | 43.5 kg (96 lb)  | 48 kg (106 lb)  |
| Cutter (shipping) weight                 | 71 kg (156 lb)   | 71 kg (156 lb)   | 74 kg (163 lb)  |
| What's in the box                        | HP Latex cutter, cutter stand, media basket, HP FlexiPrint and Cut RIP, HP Cutter Control software, quick reference guide, setup poster, documentation software, power cords, standard holder (1), standard blades (2), cut-off knife (1), 3-in media flanges (set of 2) |  |   |
| Consumption                              | 34W (working mode)   |  |   |
| Requirements                             | AC 100-240 V; 50/60 Hz; 2 A  |  |   |
| Warranty                                 | One-year limited hardware warranty   |  |   |

Powered by:



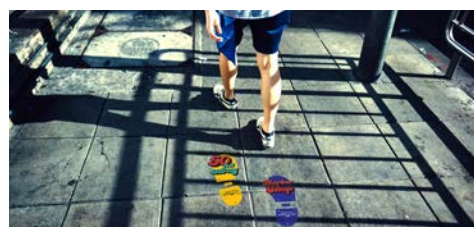
## Applications



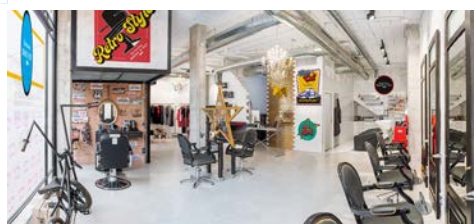
LABELS AND STICKERS



CUSTOMIZABLE CLOTHING



FLOOR GRAPHICS



WALLS DECALS



WINDOW GRAPHICS



VEHICLE GRAPHICS



For more information, please contact your local Lindenmeyr Munroe sales representative.

[LindenmeyrMunroe.com](http://LindenmeyrMunroe.com)