

NEXT DAY
DELIVERY

THIS SIDE UP



HANDLE WITH CARE

PACKAGING & INDUSTRIAL SOLUTIONS

EQUIPMENT & SUPPLY GUIDE



TABLE OF CONTENTS

BOXES, CORRUGATED

Boxes - Shop by Size	5
Printer Boxes.....	7
Cube Boxes	8
Gaylord Boxes.....	8

CHIPBOARD

Chipboard	8
-----------------	---

TAPE

Carton Sealing Tape (Hot Melt Adhesive)...	10
Carton Sealing Tape (Acrylic Adhesive)...	10
Carton Sealing Tape (Paper Flatback) ...	10
Carton Sealing Tape Dispensers	10
Water Activated Tape - Reinforced.....	12
Water Activated Manual and Automatic Gum Tape Machines.....	12
Adhesive Transfer Tape & Dispensers ...	12
Masking Tape	14

STRETCH FILM

Hand Applied	14
Heavy Duty Film Dispenser	16
Narrow Width Bundling Stretch Film	16
Machine Film	16

MAILING BAGS & ENVELOPES

Bubble Mailers.....	18
Bubble Out Bags - Self-Seal.....	18
Stayflats - Self-Seal - White	18

SHRINK FILM

IPG Shrink Film (Polyolefin)	19
Bollore Shrink Film (Polyolefin)	20

EDGE PROTECTORS

Edge Protectors - Case Packed	22
-------------------------------------	----

CUSHIONING, BUBBLE AND FOAM

Kraft Rolls.....	22
Bubble.....	23
Single Face Corrugated Rolls.....	23
Air Foam Rolls	23
Newsprint.....	26
Polyester Strapping	26
Polyester Strapping Seals.....	26

PACKING LIST ENVELOPES

Panel Face	27
Clear Face	27

LABELS AND TAGS

Thermal Labels	27
----------------------	----

BAGS, POLY

Flat Bags	28
Gusseted Bags.....	28
Reclosable Poly Bags	28
Poly Sheeting	28



PACKAGING SPECIALISTS

Consultants will analyze and evaluate your facility, providing unique solutions tailored to your operation's needs.



LOCALLY STOCKED INVENTORY

A comprehensive selection of packaging materials and equipment solutions stocked at a warehouse near you. See the following pages for our product lineup!



ORDERING MADE SIMPLE

Our state-of-the-art e-Commerce site gives you the power of information any time of day or night. Shop online at LindenmeyrMunroe.com



QUESTIONS?

Contact your local Lindenmeyr Munroe sales or customer service representative.



LOCAL TRUCKS

Our fleet of trucks are ready to roll with your next day delivery.
PS - Track your orders online with the real-time delivery feature!

+ ADDITIONAL SERVICES

- In-house service technicians for equipment installation, training and preventative maintenance
- Sustainable packaging design solutions
- Custom designed packaging
- Retail package design
- Vendor Managed Inventory (VMI) programs

CORRUGATED BOX STYLES

All flaps have the same length, and the two outer flaps (normally the lengthwise flaps) are one-half the container's width, so that they meet at the center of the box when folded. If the product requires a flat, even bottom surface, or the protection of two full layers, a fill-in pad can be placed between the two inner flaps. This is a highly efficient design for many applications. There is very little manufacturing waste. The RSC can be used for most products and is the most common box style.

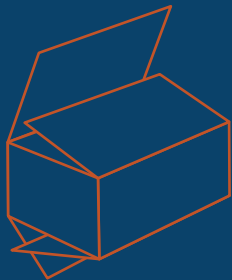


REGULAR SLOTTED CONTAINER (RSC)



HALF SLOTTED CONTAINER (HSC)

Same as Regular Slotted Container without one set of flaps.



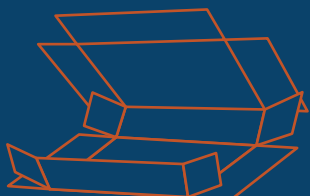
FULL OVERLAP SLOTTED CONTAINER (FOL)

All flaps have the same length (the width of the box). When closed, the outer flaps come within one inch of complete overlap. This style is especially resistant to rough handling. Stacked on its bottom panel, the overlapping flaps provide added cushioning. Stacked on its side, the extra thickness provides added stacking strength.



ONE PIECE FOLDER (OPF)

One piece of board is cut so that it provides a flat bottom, with flaps forming the sides and ends, and extensions of the side flaps meeting to form the top.

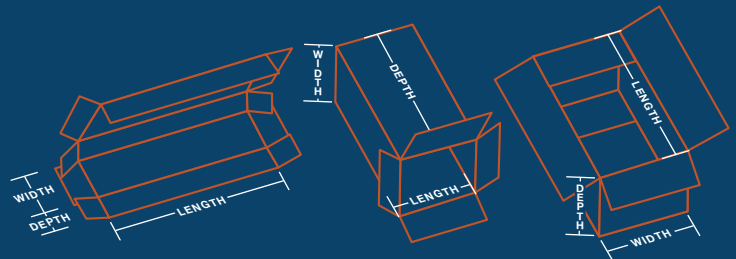


FIVE PANEL FOLDER (FPF) OR HARNESS STYLE FIVE PANEL FOLDER

A single cut and scored piece features a fifth panel used as the closing flap, completely covering a side panel. The closed box has several layers of combined board on each end, providing stacking strength and protection for long articles of small diameter which might be damaged, or damage the box, if pushed through the ends.

MEASURING BOX DIMENSIONS

Dimensions are given in the sequence of length, width and depth. Internationally, the words length, breadth and height may be used to express these dimensions. The dimensions of a box are described based on the opening of an assembled box, which can be located on the top or the side, depending on how it is to be filled. The opening of a box is a rectangle; that is, it has two sets of parallel sides. The longer of the two sides is considered its length, the shorter of the two sides is considered its width. The side perpendicular to length and width is considered the depth of the box.



FIVE PANEL FOLDER & WRAP-AROUND

END LOADING

TOP LOADING

Dimensions can be specified for either the inside or the outside of the box. Accurate inside dimensions must be determined to ensure the proper fit for the product being shipped or stored. At the same time, palletizing and distributing the boxes depends on the outside dimensions. The box manufacturer should be informed as to which dimension is most important to the customer.

MAXIMUM WEIGHT OF BOX AND CONTENTS (LBS)	MAXIMUM OUTSIDE DIMENSIONS, LENGTH, WIDTH, AND DEPTH ADDED (INCHES)	MINIMUM EDGE CRUSH TEST (ECT) (LBS PER IN WIDTH)
SINGLEWALL CORRUGATED FIBERBOARD BOXES		
20	40	23
35	50	26
50	60	29
65	75	32
80	85	40
95	95	44
120	105	55
DOUBLEWALL CORRUGATED FIBERBOARD BOXES		
80	85	42
100	95	48
120	105	51
140	110	61
160	115	71
180	120	82
TRIPLEWALL CORRUGATED FIBERBOARD BOXES		
240	110	67
260	115	80
280	120	90
300	125	112

BOXES, CORRUGATED

Boxes - Shop by Size

4"-7"

LM PART #	L" X W" X D" (INSIDE)	DESCRIPTION / STYLE	BUNDLE QTY
4855.BS040404*	4" x 4" x 4"	200#/32 ECT Corrugated	25
4855.BS050505*	5" x 5" x 5"	200#/32 ECT Corrugated	25
6816.0664	6" x 6" x 4"	200#/32 ECT Corrugated	25
6816.666	6" x 6" x 6"	200#/32 ECT Corrugated	25
4855.BS070505*	7" x 7" x 5"	200#/32 ECT Corrugated	25

8"

LM PART #	L" X W" X D" (INSIDE)	DESCRIPTION / STYLE	BUNDLE QTY
4855.BS080404	8" x 4" x 4"	200#/32 ECT Corrugated	25
6816.864	8" x 6" x 4"	200#/32 ECT Corrugated	25
6816.FB866	8" x 6" x 6"	200#/32 ECT Corrugated	25
6101.888	8" x 8" x 8"	200#/32 ECT Corrugated	25

9"

LM PART #	L" X W" X D" (INSIDE)	DESCRIPTION / STYLE	BUNDLE QTY
4855.BS090604	9" x 6" x 4"	200#/32 ECT Corrugated	25
4855.BS090606*	9" x 6" x 6"	200#/32 ECT Corrugated	25
6101.996*	9" x 9" x 6"	200#/32 ECT Corrugated	25
6101.999	9" x 9" x 9"	200#/32 ECT Corrugated	25

10"

LM PART #	L" X W" X D" (INSIDE)	DESCRIPTION / STYLE	BUNDLE QTY
4855.BS100505*	10" x 5" x 5"	200#/32 ECT Corrugated	25
6816.1064	10" x 6" x 4"	200#/32 ECT Corrugated	25
4855.BS100705*	10" x 7" x 5"	200#/32 ECT Corrugated	25
6101.1088	10" x 8" x 8"	200#/32 ECT Corrugated	25
4855.BS100810	10" x 8" x 10"	200#/32 ECT Corrugated	25
4855.10X10X4*	10" x 10" x 4"	200#/32 ECT Corrugated	25
4855.BS101006*	10" x 10" x 6"	200#/32 ECT Corrugated	25
6816.101010	10" x 10" x 10"	200#/32 ECT Corrugated	25

11"

LM PART #	L" X W" X D" (INSIDE)	DESCRIPTION / STYLE	BUNDLE QTY
4855.BS110606*	11" x 6" x 6"	200#/32 ECT Corrugated	25
4855.BS110806R	11" x 8" x 6"	200#/32 ECT Corrugated	25
4855.BS110804R	11-1/4" x 8-3/4" x 4"	200#/32 ECT Corrugated	25
4855.BS110806R	11-1/4" x 8-3/4" x 6"	200#/32 ECT Corrugated	25
4855.110808SC	11-1/4" x 8-3/4" x 8"	200#/32 ECT Corrugated	25
6816.11810	11-1/4" x 8-3/4" x 10"	200#/32 ECT Corrugated	25
6101.11810	11-1/4" x 8-3/4" x 10-3/4"	200#/32 ECT Corrugated	25
4855.BS110812	11-1/4" x 8-3/4" x 12"	200#/32 ECT Corrugated, Multi Depth 10, 8, 6	25

BOXES, CORRUGATED

Boxes - Shop by Size (cont'd)

12"

LM PART #	L" X W" X D" (INSIDE)	DESCRIPTION / STYLE	BUNDLE QTY
4855.BS120903	12" x 9" x 3"	200#/32 ECT Corrugated	25
6101.1294	12" x 9" x 4"	200#/32 ECT Corrugated	25
6816.1296	12" x 9" x 6"	200#/32 ECT Corrugated	25
6101.1299	12" x 9" x 9"	200#/32 ECT Corrugated	25
6101.12912	12" x 9-1/2" x 12"	200#/32 ECT Corrugated	25
4855.B8121004MD*	12" x 10" x 4"	200#/32 ECT Corrugated, Multi Depth 2	25
4855.BS121004	12" x 10" x 4"	200#/32 ECT Corrugated	25
6816.12106	12" x 10" x 6"	200#/32 ECT Corrugated	25
4855.BS121007	12" x 10" x 7"	200#/32 ECT Corrugated	25
4855.BS121008	12" x 10" x 8"	200#/32 ECT Corrugated	25
4855.BS121010	12" x 10" x 10"	200#/32 ECT Corrugated	25
4855.BS121012*	12" x 10" x 12"	200#/32 ECT Corrugated	25
6816.12126	12" x 12" x 6"	200#/32 ECT Corrugated	25
6816.121212	12" x 12" x 12"	200#/32 ECT Corrugated	25
4855.BS120909	12-1/4" x 9-1/4" x 9"	200#/32 ECT Corrugated	25

13"

LM PART #	L" X W" X D" (INSIDE)	DESCRIPTION / STYLE	BUNDLE QTY
6101.1377	13" x 7" x 7"	200#/32 ECT Corrugated	25
4855.BS130911	13" x 9" x 11"	200#/32 ECT Corrugated	25
4855.BS131006*	13" x 10" x 6"	200#/32 ECT Corrugated	25
4855.BS131009R*	13" x 10" x 9"	200#/32 ECT Corrugated	25
6101.131313	13" x 13" x 13"	200#/32 ECT Corrugated	25

14"

LM PART #	L" X W" X D" (INSIDE)	DESCRIPTION / STYLE	BUNDLE QTY
4855.BS140906	14" x 9" x 6"	200#/32 ECT Corrugated	25
4855.BS141004	14" x 10" x 4"	200#/32 ECT Corrugated	25
4855.BS141006*	14" x 10" x 6"	200#/32 ECT Corrugated	25
4855.BS141008*	14" x 10" x 8"	200#/32 ECT Corrugated	25
6816.141010	14" x 10" x 10"	200#/32 ECT Corrugated	25
4855.BS141212*	14" x 12" x 12"	200#/32 ECT Corrugated	25
6101.141414	14" x 14" x 14"	200#/32 ECT Corrugated	25
4855.BS140812	14-1/2" x 8-3/4" x 12"	200#/32 ECT Corrugated	25

15"-16"

LM PART #	L" X W" X D" (INSIDE)	DESCRIPTION / STYLE	BUNDLE QTY
6816.151210	15" x 12" x 10"	200#/32 ECT Corrugated	25
6101.161610	16" x 16" x 10-1/2"	200#/32 ECT Corrugated	25
6816.161616	16" x 16" x 16"	200#/32 ECT Corrugated	25

BOXES, CORRUGATED

Boxes - Shop by Size (cont'd)

17"-18"

LM PART #	L" X W" X D" (INSIDE)	DESCRIPTION / STYLE	BUNDLE QTY
6816.171165*	17-1/4" x 11-1/4" x 6-1/2"	200#/32 ECT Corrugated	25
6101.17110	17-1/4" x 11-1/4" x 10-3/4"	200#/32 ECT Corrugated	25
6816.18126	18" x 12" x 6"	200#/32 ECT Corrugated	25
6816.181212	18" x 12" x 12"	200#/32 ECT Corrugated	25
6101.181818	18" x 18" x 18"	200#/32 ECT Corrugated	20

20" AND UP

LM PART #	L" X W" X D" (INSIDE)	DESCRIPTION / STYLE	BUNDLE QTY
4855.BS202020*	20" x 20" x 20"	200#/32 ECT Corrugated	20
4855.BS201010	20" x 10" x 10"	200#/32 ECT Corrugated	25
4855.BS201410*	20" x 14" x 10"	200#/32 ECT Corrugated	20
4855.BS241212*	24" x 12" x 12"	200#/32 ECT Corrugated	25
0150.209404	48" x 40" x 36"	EZ Loader - Heavy Duty/Double Wall 48ECT	5

*Lead time 2-4 days



Printer Boxes

LM PART #	L" X W" X D" (INSIDE)	DESCRIPTION / STYLE	BUNDLE QTY
4855.BS110804R	11-1/4" x 8-3/4" x 4"	200#/32 ECT Corrugated	25
4855.BS110806R	11-1/4" x 8-3/4" x 6"	200#/32 ECT Corrugated	25
4855.110808SC	11-1/4" x 8-3/4" x 8"	200#/32 ECT Corrugated	25
6816.11810	11-1/4" x 8-3/4" x 10"	200#/32 ECT Corrugated	25
4855.BS110812	11-1/4" x 8-3/4" x 12"	200#/32 ECT Corrugated	25
4855.BS140812	14-1/2" x 8-3/4" x 12"	200#/32 ECT Corrugated	25
6816.171165*	17-1/4" x 11-1/4" x 6-1/2"	200#/32 ECT Corrugated	25
6101.17110	17-1/4" x 11-1/4" x 10-3/4"	200#/32 ECT Corrugated	25

*Lead time 2-4 days

 Lindenmeyr Munroe

CUSTOM
packaging
capabilities



1

**STRUCTURAL DESIGN;
CONCEPTUAL RENDERINGS
& PROTOTYPES**

**CUSTOM
MATERIAL
OPTIONS**

- Corrugated Boxes
- Folding Carton
- Labels



2

**BRANDED; PRINT &
PRODUCTION**

- Mailing Bags
- Polypro Tape
- Shrink Sleeves



3

**WAREHOUSE &
DISTRIBUTION**

- Blister Pack
- Foam
- Poly & Paper Bags

BOXES, CORRUGATED



Cube Boxes

LM PART #	L" X W" X D" (INSIDE)	DESCRIPTION	BUNDLE QTY
4855.BS040404*	4" x 4" x 4"	200#/32 ECT Corrugated	25
6816.666	6" x 6" x 6"	200#/32 ECT Corrugated	25
6101.888	8" x 8" x 8"	200#/32 ECT Corrugated	25
6101.999	9" x 9" x 9"	200#/32 ECT Corrugated	25
6816.101010	10" x 10" x 10"	200#/32 ECT Corrugated	25
6816.121212	12" x 12" x 12"	200#/32 ECT Corrugated	25
6101.131313	13" x 13" x 13"	200#/32 ECT Corrugated	25
6101.141414	14" x 14" x 14"	200#/32 ECT Corrugated	25
6816.161616	16" x 16" x 16"	200#/32 ECT Corrugated	25
6101.181818	18" x 18" x 18"	200#/32 ECT Corrugated	20
4855.BS202020*	20" x 20" x 20"	200#/32 ECT Corrugated	20

*Lead time 2-4 days



Gaylord Boxes

LM PART #	L" X W" X D" (INSIDE)	DESCRIPTION	PACK
0150.209404	48" x 40" x 36"	EZ Loader - Heavy Duty/Double Wall 48ECT	5

CHIPBOARD



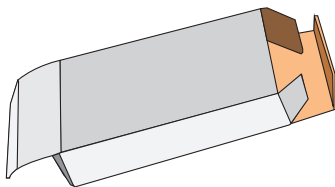
Chipboard

22 PT

LM PART #	SIZE	CALIPER	PACK
1915.146210	8-1/2" x 11"	22 pt	960/BD
1915.146215	8-1/2" x 14"	22 pt	760/BD
1915.146217	11" x 17"	22 pt	480/BD
1915.146219	12" x 18"	22 pt	400/BD
1915.146220	17-1/2" x 22-1/2"	22 pt	228/BD
1915.146221	13" x 19"	22 pt	350/BD
1915.146235	22-1/2" x 34-1/2"	22 pt	116/BD
1915.146240	26" x 38"	22 pt	91/BD
1915.146245	28-1/2" x 34-1/2"	22 pt	92/BD
1915.146247	28" x 40"	22 pt	80/BD

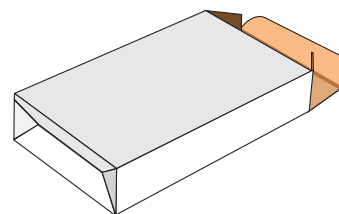
FOLDING CARTON BOX STYLES

Examples of
our most
popular styles



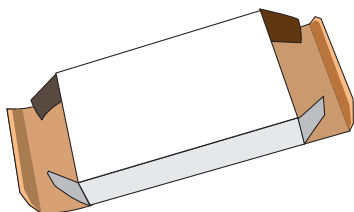
Reverse Tuck

Ends tuck into box from opposite directions. Most economical layout due to tight nesting.



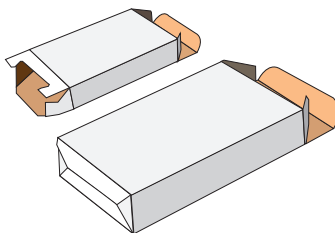
Tuck Top/Auto Bottom

Also called “crash-lock” bottom. Bottom pops into place automatically, increasing filling speeds in hand fulfillment operations.



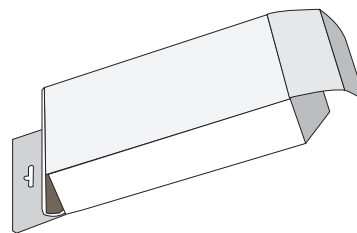
Straight Tuck

Ends tuck into the box from the same direction. Presents a more finished appearance on the face.



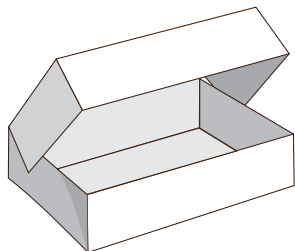
Snap Lock Bottom

Also called a 1-2-3 bottom. Bottom is assembled with overlapping tuck flaps for additional strength.



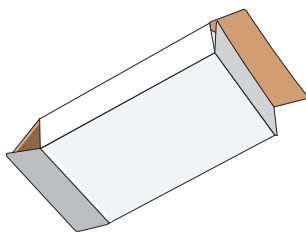
Straight Tuck with Header

If a carton is to hang on a rack, the hanger extension requires the carton to be a straight tuck.



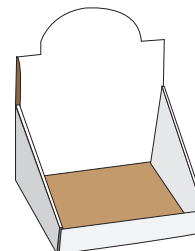
Infold Trays

Glued style that ships flat and then pops into a carton. Ideal for applications like food, stationery or clothing.



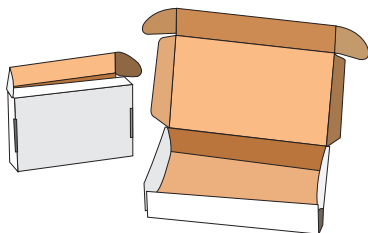
Seal End

Designed for use with high-speed automated filling equipment. Ends are glued by the machine during fulfillment.



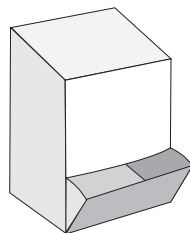
Counter Top Display

Counter top displays are frequently designed as the shipper carton as well so they serve a dual purpose; they carry and display the product for you.



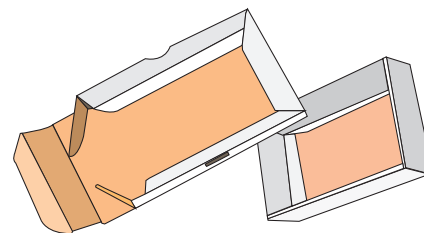
Tab Lock Tray with Lid

Inexpensive style to assemble as it requires no gluing. Ideal for presenting applications like sample or media kits.



Dispenser

Display and dispenser styles are numerous. This is a popular style because the carton can be loaded and reloaded from the top for continuous stocking.



Simplex

Economical 2-piece style. No gluing required, making it easy to assemble. Also stores and ships flat.

TAPE



Carton Sealing Tape (Hot Melt Adhesive)

HAND LENGTH

LM PART #	SIZE	MIL	COLOR	GRADE	ROLLS/CASE
5182.6052110	2" x 110 yds	1.6	Clear	Primetac 605	36
4272.37148914	2" x 110 yds	1.8	Clear	3M 371	36
4272.37172100	3" x 110 yds	1.8	Clear	3M 371	24
3494.710048100	2" x 110 yds	1.85	Clear	Intertape 7100	36
3494.710072100	3" x 110 yds	1.85	Clear	Intertape 7100	24
5182.620	2" x 110 yds	1.9	Clear	Primetac 620	36
3494.9100	3" x 110 yds	2.5	Clear	Intertape 9100	36

MACHINE LENGTH

LM PART #	SIZE	MIL	COLOR	GRADE	ROLLS/CASE
5182.60521500	2" x 1,500 yds	1.6	Clear	Primetac 605	6
4272.37148914	2" x 1,000 yds	1.8	Clear	3M 371	6
3494.710048914	2" x 1,000 yds	1.9	Clear	IPG 7100	6
5182.6200	2" x 1,000 yds	1.9	Clear	Primetac 620	6
5182.6203	3" x 1,000 yds	1.9	Clear	Primetac 620	4



Carton Sealing Tape (Acrylic Adhesive)

LM PART #	SIZE	MIL	COLOR	GRADE	ROLLS/CASE
5182.405	2" x 110 yds	1.88	Clear	Primetac 405	36
5182.419E	2" x 110 yds	2	Clear	Primetac 419E	36
0363.481002	2" X 110 yds	2	Clear	Alliance Plastics	36
4272.31111132	2" x 110 yds	2.05	Clear	3M 311+	36
4272.3111TAN	2" x 110 yds	2	Tan	3M 311	36
3494.710048100R	2" x 110 yds	2.1	Red	Intertape 321	36
5182.420	3" x 110 yds	2.12	Clear	Primetac 420	36
5182.440	3" x 110 yds	2.6	Clear	Primetac 440	24



Carton Sealing Tape (Paper Flatback)

LM PART #	SIZE	MIL	COLOR	GRADE	ROLLS/CASE
5182.850	2" x 55 yds	7.7	Kraft	Primetac 850	24



Carton Sealing Tape Dispensers

LM PART #	DESCRIPTION
4855.3361	2" Standard Pistol Grip Dispenser
4855.3	3" Heavy Duty Tape Gun Dispenser



THE COMPLETE PACKAGE.



PACKAGE **BRANDING.**

Printed Tape: Showcase your brand by custom printing your logo and promotional message directly on the tape – a cost-effective solution to printing on the box.

Printed Air Pillows: Reinforce your branding message inside the box with your logo and call-to-action.



PACKAGE **SECURITY.**

Water-Activated Tape: When moistened, water-activated tape (WAT) welds to the box it is being applied to, becoming part of the box. This seal is tamper-evident and reliable in dusty, dirty, extreme cold and humid conditions.

Pressure-Sensitive Tape: IPG's hot melt carton sealing tape with Corru-Grip™ technology is designed for optimal closure of highly recycled corrugate, including 100% recycled boxes.



PACKAGE **PROTECTION.**

Paper Void Fill, Cushioning & Systems: Why choose paper for your company's void fill and product protection? Because it's versatile, cost-effective, easy-to-use and eco-friendly. Void fill and cushioning produced by PaperSpace Paper Systems and HexcelWrap are 100% curbside recyclable!

Mailers: Easy-to-use and more cost effective alternatives to boxes and other containers. Each mailer is durable and lightweight, can be custom printed, and is available in standard and custom sizes.

Air Pillows & Machines: Brace and protect your items during shipment with AirSpace air pillows. Recyclable, clean and transparent, they allow products to be seen while secured. Produce void fill on-demand with AirSpace air pillow machines – the fastest on the market!

Bubble & Foam Cushioning: DurabubbleRP provides cost effective packaging bubble for superior wrapping, cushioning and surface protection. Starfoam is highly resistant to punctures, tears and impact and provides excellent surface protection and cushioning for everything from sporting goods to auto parts.

Shrink & Stretch Films: From pizza to paper cups, IPG's shrink film solutions help reduce packaging costs, improve package appearance, and increase output. Our variety of stretch films hold your palletted loads together for shipment or warehouse storage.



PACKAGE **AUTOMATION.**

Case Sealing Machines: For businesses growing exponentially, fulfillment automation is the answer! IPG's case sealing machines help improve productivity, reduce labor, reduce material usage and improve ergonomics.

Tape Dispensers: As the market leader for water-activated tape, IPG's commitment continues with our complete line of Better Pack® dispensers, trusted by many top internet retailers.

TAPE



Water Activated Tape - Reinforced

LM PART #	SIZE	COLOR	GRADE	ROLLS/CASE
3494.K9001	70 mm x 450'	Kraft	VENOM	10
3494.K6064	72 mm x 450'	White	235	10
4272.6144	70 mm x 450'	Kraft	6144	10
4272.6145	72 mm x 450'	Kraft	6145	10
4272.6147	3" x 450'	Kraft	6147	10



Water Activated Manual and Automatic Gum Tape Machines

BETTER PACK

0713.BET333PL*	Betterpack Manual Dispenser
0713.BET555ESA*	Betterpack Electric Push Button Tape Dispenser

*Call for lead time



Adhesive Transfer Tape & Dispensers

LM PART #	SIZE	MIL	DESCRIPTION	GRADE	PACK
4272.924	1/2" x 36 yds	2	Adhesive Transfer Tape	3M 924	72 RL/CA
4272.31199	1/2" and 3/4"		Adhesive Transfer Tape Applicator	3M ATG 700	1



High Performance Case Sealers, Erectors, Labelers & Coding Equipment

ERECT



LDX-RTB High Speed Random Case Sealer

- 40-80% faster than the competition
- Go-to machine for E-commerce
- Robust, industrial design
- Quick and easy maintenance
- A variety of other models available

SEAL



Fast and Reliable Case Erectors Automatic and Semi-Automatic Models Available

LABEL



A Full Range of Print and Apply & Apply Only Labeling Systems

CODE



Custom Marking & Coding Solutions

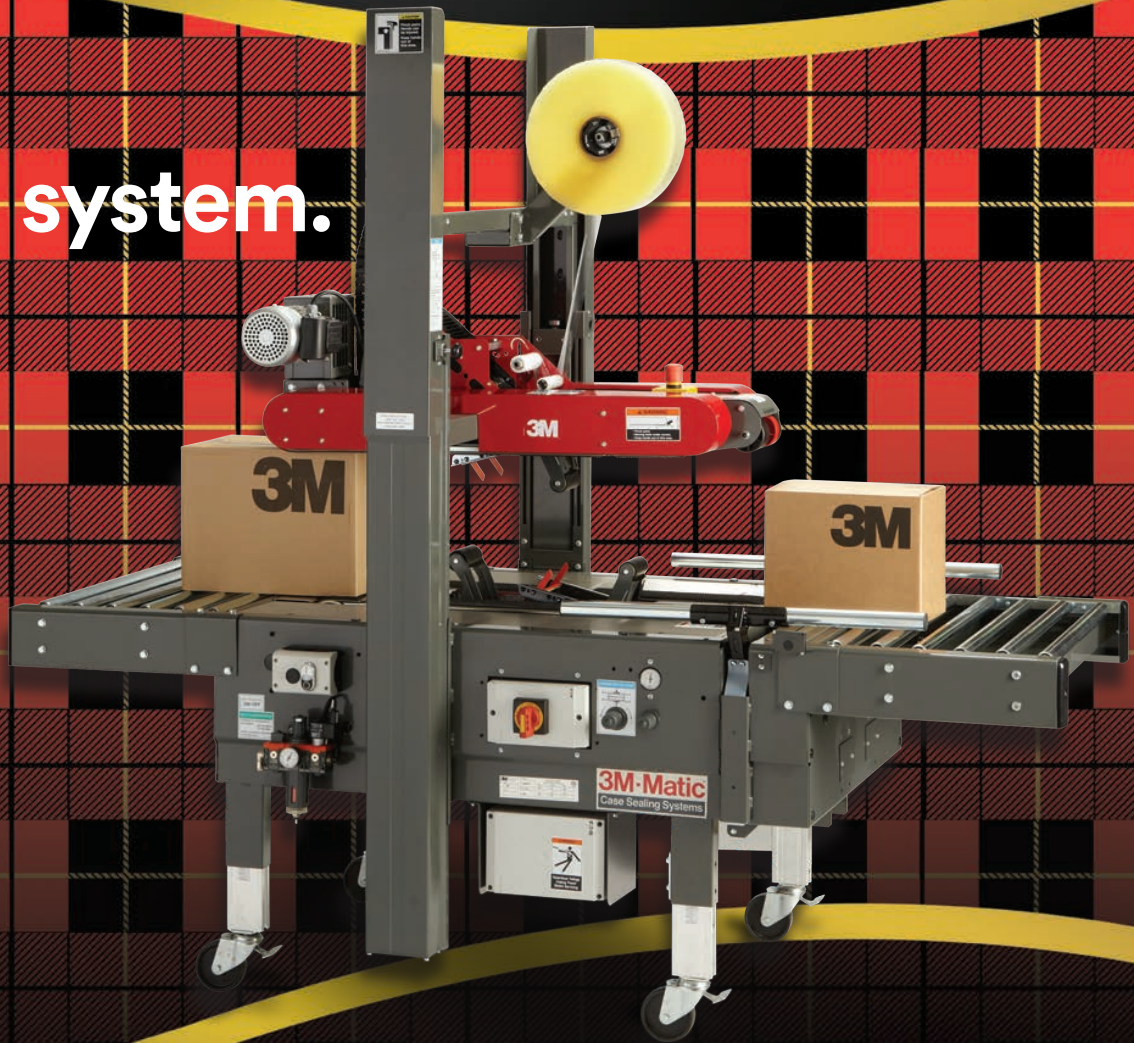


Scotch®



Right tapes.

Right system.



Right partner.

3M is a trademark and Scotch is a registered trademark of 3M Company. © 2020 3M.

It's not sealed until it's Scotch® sealed.



3M

TAPE



Masking Tape

LM PART #	SIZE	MIL / GRADE	COLOR	GRADE	ROLLS/CASE
3494.513	1" x 50 yds	4.6 / Utility	Natural	IPG 513	72
4272.1011255	1" x 55 yds	5.1 / Medium	Natural	3M 101	72
4272.101	2" x 55 yds	5.1 / Medium	Natural	3M 101	24
3223.803	2" x 50 yds	5.5 / Medium	Natural	Hystik 803	36
5182.840	2" x 60 yds	6 / Painters Tape	Blue	Primetac 840	24

STRETCH FILM



Hand Applied

CAST

LM PART #	SIZE	GAUGE	COLOR	DESCRIPTION	ROLLS/CASE	PALLET QTY
4096.18075450	17.7" x 1,476'	75	Clear	Malpack	4	64 cases
3494.2031200	12" x 1,500'	80	Clear	IPG	4	60 cases
3494.2031500	15" x 1,500'	80	Clear	IPG	4	48 cases
3494.2031800	18" x 1,500'	80	Clear	IPG	4	48 cases
3494.1020457	18" x 2,000'	40	Clear	IPG	4	64 cases
3494.15212000	18" x 2,000'	60	Clear	IPG	4	48 cases
0363.18115	18" x 1,500'	115	Clear	Alliance Plastics	4	48 cases

PRESTRETCH

LM PART #	SIZE	GAUGE	COLOR	DESCRIPTION	ROLLS/CASE	PALLET QTY
4096.L450BX	16" x 1,476'	28	Clear	Malpack Wraplicator Light <i>(Dispenser Required)</i>	4	48 cases
4096.161476	16" x 1,476'	32	Clear	Malpack Wraplicator Medium <i>(Dispenser Required)</i>	4	48 cases
4096.M450BX	17.25" x 1,475'	32	Clear	Malpack Medium	4	48 cases
0363.181500	18" x 1,500'	28	Clear	Alliance Plastics	4	48 cases



ADHESIVE TAPE SOLUTIONS FOR INDUSTRIAL APPLICATIONS

tesa® 4965

High Temperature & Shear Resistance



- Polyester (PET) backing coated on both sides with a transparent modified acrylic adhesive
- Suitable for long term outdoor applications; can be exposed to harsh environmental conditions
- Great adhesion on difficult to bond surfaces

tesa® 51966

Excellent Tack & Good Chemical Resistance



- PET backing and a highly tackified adhesive
- Suitable for long-term applications
- Good combination of benefits from 4965 and 4970

tesa® 4970

High Tack & Immediate Adhesion



- PVC-film backing
- Ideal for mounting decorative point of sale materials and displays
- Perfect option for mounting on rough surfaces



WULFTEC

A DURAVANT COMPANY

LOAD CONTAINMENT SOLUTION EXPERTS



WE FEAR NO PACKAGING CHALLENGE

Stretch Wrappers, Strapping Systems, Pallet Handling Solutions

STRETCH FILM



Heavy Duty Film Dispenser

LM PART #	DESCRIPTION
4096.100000	Malpack Wrapicator
4096.100001	Malpack Wrapicator 2.0
4855.100	Heavy Duty Stretch Film Handle Grip Dispenser for 11-1/2" to 20" film



Narrow Width Bundling Stretch Film

LM PART #	SIZE	GAUGE	COLOR	DESCRIPTION	ROLLS/CASE
5182.510055	5" x 1,000'	55	Clear	1 dispenser per case	12
5182.5100	5" x 1,000'	80	Clear	1 dispenser per case	12



Machine Film

LM PART #	SIZE	GAUGE	COLOR	DESCRIPTION	ROLLS/PALLET
4096.2004565	20" x 6,500'	45	Clear	Malpack Axis	50
4096.2005050	20" x 5,000'	50	Clear	Malpack Axis	72
3494.20635000	20" x 5,000'	63	Clear	IPG Hi Pro	40
3494.20636000	20" x 6,000'	63	Clear	IPG Hi Pro	40
3494.11782000	20" x 6,000'	70	Clear	IPG	40
3494.12032000	20" x 5,000'	80	Clear	IPG	40
3494.12033000	30" x 6,000'	80	Clear	IPG	40
4096.2008050	20" x 5,000'	80	Clear	Malpack STM	40



CALUMET CARTON COMPANY

Your Partner In Mailing & Packaging Solutions Since 1930

- ▶ PRINTING
- ▶ DIE CUTTING
- ▶ FORMING
- ▶ FINISHING
- ▶ MAILERS
- ▶ FOLDING CARTONS
- ▶ FORMED CARTONS
- ▶ FOOD AND BEVERAGE



Wide Variety Kept In Stock For
Immediate Delivery.

Custom Printing and Sizing Available

90 YEARS
OF PACKAGING
AND MAILING INNOVATION



Semi-Automatic & Automatic Stretch Wrappers
Shrink Wrappers & Wrap-Around Case Packers • Palletizers & Depalletizers
Case Erectors & Case Tapers • Laser Guided Vehicles

ROBOPAC®

Innovation driven by values



THE BEST TECHNOLOGY
with the shortest payback.

Deliver EXACTLY the right amount of film
at EXACTLY the right position, with
EXACTLY the right containment force.

- Improves load containment
- Reduces product damage by 40%



REMOTE CONNECTIVITY & CONTROL

Be There Without Being There.
Safely monitor and adjust your
machine's performance remotely -
anywhere, at any time.



MAILING BAGS & ENVELOPES



Bubble Mailers

SELF-SEAL KRAFT

Pregis Brand

LM PART #	SIZE	PART #	COLOR	QTY/CASE
4855.B853SS	6" x 10"	0	Kraft	250
4855.ENVB856SS	8-1/2" x 14-1/2"	3	Kraft	100
4855.ENVB857SS	9-1/2" x 14 1/2"	4	Kraft	100
4855.B858SS	10-1/2" x 16"	5	Kraft	100
4855.ENVB859SS	12-1/2" x 19"	6	Kraft	50

Polyair Brand

LM PART #	SIZE	PART #	COLOR	QTY/CASE
1188.81214	8-1/2" x 14-1/2"	3	Kraft	100

BUBBLE LINED POLY MAILERS - SELF-SEAL

LM PART #	SIZE	PART #	COLOR	QTY/CASE
1188.XPAK0	6" x 10"	0	White	250
1188.XPAK2	8-1/2" x 12"	2	White	100
1188.XPAKS	10-1/2" x 16"	5	White	100



Bubble Out Bags - Self-Seal

LM PART #	SIZE	BUBBLE SIZE	STYLE	QTY/CASE
5168.422382	12" x 15-1/2"	3/16"	Self Seal	200



Stayflats - Self-Seal - White

STAYFLATS - SELF-SEAL - WHITE

LM PART #	SIZE	STYLE	COLOR	QTY/CASE
1153.896005	7" x 9"	Self-Seal	White	100/CA
1153.896000	9-3/4" x 12-1/4"	Self-Seal	White	100/CA
1153.896001	11" x 12-1/2"	Self-Seal	White	100/CA
1153.896002	12-3/4" x 15"	Self-Seal	White	100/CA
1153.896003	13" x 18"	Self-Seal	White	100/CA
1153.896004	17" x 21"	Self-Seal	White	100/CA

We don't just specialize
in OEM integration.

WE STARTED IT!

Shrink Bundling

Case Packing & Tray Loading

Horizontal Shrink Wrapping

Pallet Stretch Wrapping

Conventional &
Robotic Palletizing

Robotic Handling

ARPAC

A DURAVANT COMPANY

SHRINK FILM



IPG Shrink Film (Polyolefin)

LM PART #	SIZE	GAUGE	COLOR	DESCRIPTION	ROLLS/CASE
3494.8604375	8" x 4,375'	60	Clear		2
3494.10604375	10" x 4,375'	60	Clear		2
3494.12604375	12" x 4,375'	60	Clear		1
3494.14604375	14" x 4,375'	60	Clear		1
3494.14604375P	14" x 4,375'	60	Clear	Perfed	1
3494.16604375	16" x 4,375'	60	Clear		1
3494.16604375P	16" x 4,375'	60	Clear	Perfed	1
3494.18604375P	18" x 4,375'	60	Clear	Perfed	1
3494.20604375P	20" x 4,375'	60	Clear	Perfed	1
3494.14003500	14" x 3,500'	75	Clear	Perfed	1
3494.20753500	20" x 3,500'	75	Clear	Centerfold	1
3494.141002625	14" x 2,625'	100	Clear		1
3494.161002625	16" x 2,625'	100	Clear		1

SHRINK FILM



Bollore Shrink Film (Polyolefin)

LM PART #	SIZE	GAUGE	COLOR	DESCRIPTION	ROLLS/CASE
0738.8404375	8" x 6,560'	40	Clear	Centerfold	2
0738.BCL10CF40	10" x 6,560'	40	Clear	Centerfold - Perfed	2
0738.BCL12CF40	12" x 6,560'	40	Clear	Centerfold - Perfed	1
0738.1060	10" x 4,375'	60	Clear	Centerfold	2
0738.BCL10CF60	10" x 6,560'	60	Clear	Centerfold - Perfed	2
0738.BZ1260P	12" x 4,375'	60	Clear	Centerfold - Perfed	1
0738.1260	12" x 4,375'	60	Clear	Centerfold	1
0738.BZ14CF60	14" x 4,375'	60	Clear	Centerfold - Perfed	1
0738.1460	14" x 4,375'	60	Clear	Centerfold	1
0738.BZ16CF60	16" x 4,375'	60	Clear	Centerfold - Perfed	1
0738.BZ18CF60	18" x 4,375'	60	Clear	Centerfold - Perfed	1
0738.5754375	5" x 3,500'	75	Clear	Centerfold	2
0738.8753500	8" x 3,500'	75	Clear	Centerfold	2
0738.BCL12CF75	12" x 3,500'	75	Clear	Centerfold - Perfed	1
0738.1275	12" x 3,500'	75	Clear	Centerfold	1
0738.143500	14" x 3,500'	75	Clear	Centerfold	1
0738.14753500	14" x 3,500'	75	Clear	Centerfold	1
0738.BCL16CF75	16" x 3,500'	75	Clear	Centerfold - Perfed	1
0738.1675	16" x 3,500'	75	Clear	Centerfold	1
0738.BCL18CF75	18" x 3,500'	75	Clear	Centerfold - Perfed	1
0738.183500	18" x 3,500'	75	Clear	Centerfold	1



Complete Shrink Wrapping & Bundling Solutions



Shrink Wrappers ■ Shrink Bundlers ■ e-Pack Auto Mailers ■ Tunnels ■ Infeeds





Proud home of the **RAPID HS** Program
5 Days or Less™

Heat Seal manufactures a full line of affordable high quality shrink wrapping and skin packaging equipment in Cleveland, Ohio, USA. They are dedicated to building innovative and reliable products while also providing top of the line customer service.

- ✓ Simple Semi Automatic Shrink Wrap Systems
- ✓ Simplify Packaging, Lower Costs
- ✓ All Electric Automatic L-Bar Shrink Wrap Systems
- ✓ Skin Packaging Systems



HSE 50



HSE 100



HDX 250



HDX 250A



HDX 350



THRIFTY

Automatic Combo Shrink System

Full range of tunnels and conveyors available



TX5218



HDX 2000

High Speed All Electric Automatic L-Bar System with Tunnel



Safe. Secure. Visible.

VBoard® – 100% RECYCLABLE EDGE PROTECTION



ENGINEERED SOLUTIONS CUSTOMIZED FOR YOUR APPLICATION

- ✓ 100% RECYCLABLE CURBSIDE
- ✓ REDUCE ASSEMBLY TIME
- ✓ USE INSIDE OR OUTSIDE PACKAGE
- ✓ CUSTOMIZE TO PACKAGE DIMENSIONS
- ✓ MEETS AMAZON FRUSTRATION-FREE CERTIFICATION

ISTA® 6 TEST LAB: PACKAGE TESTING AND CERTIFICATION

Shipping through Amazon? Use our ISTA Lab to test and certify your packages.



GREAT SERVICE. GREAT RELIABILITY. GREAT SOLUTIONS.

EDGE PROTECTORS



Edge Protectors - Case Packed

LM PART #	SIZE	THICKNESS	PACK
6445.2236160W	2" x 2" x 36"	0.160	2,240/SK
6445.3322548	3" x 3" x 48"	0.225	1,100/SK

CUSHIONING, BUBBLE AND FOAM



Kraft Rolls

LM PART #	BASIS WEIGHT	SIZE	LENGTH	PALLET QTY
6859.37363032	30 lb	36" Roll	1,200'	25 rolls
6859.904665	40 lb	18" Roll	900'	50 rolls
6859.904668	40 lb	48" Roll	900'	25 rolls
6859.904660	50 lb	18" Roll	720'	50 rolls
6859.904662	50 lb	24" Roll	720'	50 rolls
6859.904663	50 lb	30" Roll	720'	25 rolls
6859.904664	50 lb	36" Roll	720'	25 rolls

CUSHIONING, BUBBLE AND FOAM



Bubble

ECONOMY

LM PART #	BUBBLE HEIGHT	ROLLS SIZE	DESCRIPTION	COLOR	MANUFACTURER	ROLLS/BUNDLE
4855.CBWUP31648P	3/16"	48" x 300'	No Slit, Perfed 12"	Clear	PW	1
4855.31648300	3/16"	48" x 300'	Slit to 12", Perfed 12"	Clear	PW	4
1188.1204250P12	1/2"	48" x 250'	Slit to 24", Perfed 12"	Clear	Poly Air	2

INDUSTRIAL

LM PART #	BUBBLE HEIGHT	ROLLS SIZE	DESCRIPTION	COLOR	MANUFACTURER	ROLLS/BUNDLE
4855.31612	3/16"	48" x 500'	Slit to 24", Perfed 12"	Clear	PW	1
1188.3604750	3/16"	48" x 750'	Slit to 24", Perfed 12"	Clear	Poly Air	1
4855.1248P	1/2"	48" x 250'	No Slit, Perfed 12"	Clear	PW	1



Single Face Corrugated Rolls

A FLUTE

LM PART #	ROLL WIDTH	LENGTH	PALLET QTY
0884.36250A	36"	250'	8 rolls
0884.48250A	48"	250'	8 rolls

B FLUTE

LM PART #	ROLL WIDTH	LENGTH	PALLET QTY
0884.04250	4"	250'	25 rolls
0884.24250	24"	250'	12 rolls
0884.36250B	36"	250'	12 rolls
0884.48250B	48"	250'	12 rolls
0884.72250	72"	250'	4 rolls



Air Foam Rolls

LM PART #	THICKNESS	SIZE	DESCRIPTION	COLOR	ROLLS/BUNDLE
1188.1856	3/16"	72" x 350'	No Slit, Perfed 12"	White	1
5168.41916	3/16"	72" x 1,250'	Slit to 24",-Perfed 12"	White	3

We are here to help you Protect:

Environment

Prevent damage.
Protect the planet.

Brand

Elevate customer
experience. Increase
brand loyalty.

Profits

Decrease labor costs.
Increase productivity.



Pregis takes a holistic approach to support our customers and the environment.



Protect our planet by reducing damage.
Protect customers' products, profits,
brand and customer lifetime value.



Preserve natural resources & the
environment by designing for circular
economy and operational excellence.



"Inspyre" people through education,
industry advocacy & giving back.
People are the "y" in Inspyre!

Products worth protecting deserve Pregis.

Learn more about the complete
portfolio of protective solutions:

Inside the box packaging
On demand packaging systems

Automated mailing & bagging solutions
Temporary surface protection films

**Schedule a consultation today to protect
what matters most to your business.**



FillPak

Lock an item
in place
with sustainable, light-weight
void fill materials



FillPak
M



FillPak
TT



FillPak
TT Cutter



FillPak
SL



FillPak
Trident

Cover &
cushion an item
to reduce the force of
external impact

PadPak



PadPak
CC



PadPak
JR



PadPak
Auto JR



PadPak
LC



PadPak
SR

Geami & WrapPak

Wrap an item
to protect against surface
abrasion and minor incidents.



Geami
EX/EX mini



Geami
M Edge



Geami
M



Geami
HV



WrapPak
PackStation



WrapPak
Protector

At Ranpak, we offer the full spectrum of in-the-box,
paper-based technologies and products

CUSHIONING, BUBBLE AND FOAM



Newsprint

SHEETS

LM PART #	SIZE	BASIS WEIGHT	BUNDLE WEIGHT	SHEETS/BUNDLE	PALLET QTY
4775.243630	24" x 36"	30 lb	25 lb	400	40 bundles

ROLLS

LM PART #	SIZE	BASIS WEIGHT	ROLL WEIGHT	PALLET QTY
0884.896101	36" x 1,650'	30 lb	25 lb	30 rolls

STRAPPING



Polyester Strapping

LM PART #	BRAND	WIDTH	GAUGE	BREAK STRENGTH	CORE	APPROX LENGTH/COIL	COLOR	PALLET QTY
4904.12720	Pac Strapping	1/2"	.023 / Smooth	600 lbs	16" x 6"	7,200'	Black	24
4904.1225	Pac Strapping	1/2"	.025 / Embossed	600 lbs	16" x 6"	7,200'	Black	28
4904.583513	Pac Strapping	5/8"	.035 / Embossed	1,400 lbs	16" x 6"	4,000'	Green	28
4904.5840	Pac Strapping	5/8"	.040 / Smooth	1,600 lbs	16" x 6"	4,000'	Green	28



Polyester Strapping Seals

LM PART #	WIDTH	DESCRIPTION	CASE QTY
4855.12OPEN*	1/2"	Serrated Polyester Strapping Seals	1,000/CA
4855.58OPEN*	5/8"	Serrated Polyester Strapping Seals	1,000/CA

*Available in 2-3 days



**YOUR PASSION IS YOUR PRODUCT.
OUR PASSION IS PROTECTING IT.**



GripPack CB
Battery-powered Cutter
for Steel and Plastic Strap



GripPack SLB
Battery-powered Combination
Tool for Steel Strap



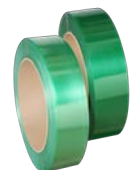
BXT3 Combination Tool
for Polypropylene or
Polyester Strapping



VT Pneumatic
Combination Tool for
Polyester Strapping



SGP Plastic
Strapping Machine



Tenax
Polyester Strapping

PACKING LIST ENVELOPES



Panel Face

LM PART #	SIZE	DESCRIPTION	COLOR	QTY/CASE
3845.200060	4-1/2" x 5-1/2"	Back Load	Orange	1,000
3845.3883	5-1/2" x 10"	Back Load	Orange	1,000



Clear Face

LM PART #	SIZE	DESCRIPTION	COLOR	QTY/CASE
3845.200020	4-1/2" x 5-1/2"	Back Load	Clear	1,000
3845.200010	7" x 5-1/2"	Back Load	Clear	1,000

LABELS AND TAGS



Thermal Labels

DIRECT THERMAL

LM PART #	DESCRIPTION	SIZE	PACK
0225.DT461	Direct Thermal White w/Perf - 1" Core	4" x 6"	250/RL, 4 RL/CA
0225.DT46-1P	Direct Thermal White w/Perf - 3" Core	4" x 6"	1,000/RL, 4 RL/CA

THERMAL TRANSFER

LM PART #	DESCRIPTION	SIZE	PACK
0225.TH46-1PPL	Thermal Transfer Label w/Perf - 3" Core	4" x 6"	1,000/RL, 4 RL/CA

WAX RIBBON

LM PART #	DESCRIPTION	SIZE	PACK
0225.1476W	Thermal Transfer Wax Ribbon - Black	4.33" x 1476'	24 RL/CA

BAGS, POLY



Flat Bags

LM PART #	SIZE	THICKNESS	COLOR	QTY/CASE
3845.199995	4" x 6"	2 mil	Clear	1,000
3845.200000	6" x 8"	2 mil	Clear	1,000
2349.724	7" x 24"	.7 mil	Clear Umbrella Bag	1,000
2349.735	7" x 35"	.7 mil	Clear Umbrella Bag	1,000
2349.0915	9" x 15"	2 mil	Clear	1,000
3845.200030	18" x 24"	2 mil	Clear	500
3845.200031	24" x 26"	1.5 mil	Clear	500



Gusseted Bags

LM PART #	SIZE	THICKNESS	COLOR	QTY/CASE
2349.104024	10" x 4" x 24"	1 mil	Clear	1,000



Reclosable Poly Bags

LM PART #	SIZE	THICKNESS	COLOR	QTY/CASE
3845.200043	4" x 6"	2 mil	Clear	1,000
3845.200040	12" x 12"	2 mil	Clear	500



Poly Sheeting

LM PART #	SIZE	THICKNESS	COLOR	DESCRIPTION	PACK
3845.4425	10' x 100'	4 mil	Clear	C&A Film	1 roll

Custom Poly Program

2,200 Stock Sizes

	MIL	WIDTH	LENGTH
Poly Bags			
Layflat Bags	0.75 to 8	4" - 54"	8" - 60"
Layflat Bags on Rolls	0.75 to 8	4" - 98"	8" - 288"
Gusseted Bags	0.75 to 6	4" - 54"	8" - 60"
Gusseted Bags on Rolls	0.75 to 6	4" - 96"	8" - 288"

Reclosable Bags

Zip Top	2 to 6	3" - 30"	3" - 36"
---------	--------	----------	----------

Poly Tubing

Clear	0.75 to 8	4" - 98"	
Black Conductive	4	4" - 24"	
Pink Anti-Static	0.75 to 8	4" - 98"	

Poly Film

C & A Film	1 to 6	3' - 20'	
Sheets on Rolls	1 to 8	24" - 120"	8" - 288"
Pallet Top Sheeting	1 to 8	24" - 120"	8" - 288"

Vented Bags

W + D max. = 150"	0.75 to 8	4" - 98"	8" - 288"
-------------------	-----------	----------	-----------

Micro-Perforation

W + D max. = 118"	0.75 to 5	10" - 60"	8" - 288"
-------------------	-----------	-----------	-----------

Centerfolding

W + D max. = 150"	0.75 to 6	60" - 98"	
-------------------	-----------	-----------	--

Materials Available

LDPE for blend used in stock films

LLD for all high strength linear low density films

Anti-Static for all static dissipative films

VCI (Vapor Corrosive Inhibitor) for films to prevent rust

Black Conductive for static control and corrosive needs

Postal Approved for films used in USPS mailing

Clarity for improved visibility of film contents

Non-Slip to increase friction between films

Non-Scratch for a smoother film surface

Metalocene for high strength films or cold storage

Anti-Block for films that open easily for loading

High Slip for reduced friction between films

UVI/UA to protect film and contents from the sun

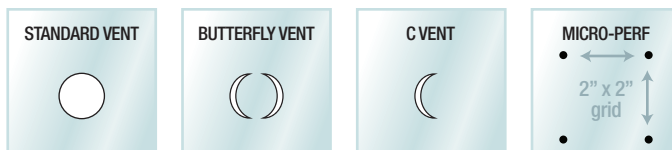


Printing, Venting, Colors

Random Repeat Printing

Single Color:	Black, Blue, Red, Green or White Ink
Maximum Image Size:	6.25" x 1"
Maximum Repeat:	12"
Print Orientation:	Horizontal or Vertical

Venting



Ventec Bags	W-D max. = 150"	0.75 to 8	4" - 98"
Micro-Perforator	W-D max. = 118"	0.75 to 5	10" - 60"

Colors (swatches are approximate)

Black	Med. Blue	Red
Brown	Sky Blue	Orange
Buff	Baby Blue	Yellow
Gray	Leaf Green	Pink
White	Dark Green	

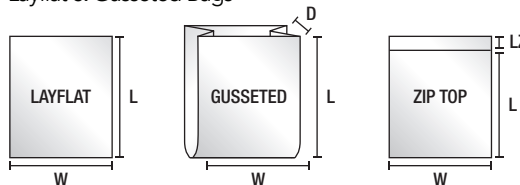
Tint for films that you can see through in interior light

Color for films you may not see through in interior light

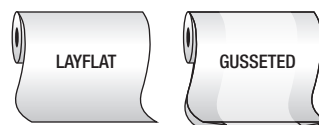
Opaque for films you cannot see through in interior light. Black film only & minimum thickness of 2.5 mil.

Bag, Tubing & Sheeting Styles

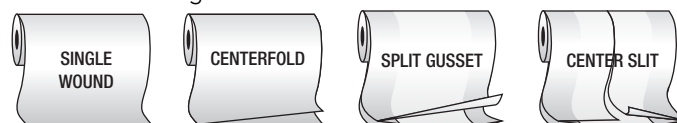
Layflat & Gusseted Bags



Continuous Tubing*



Continuous Sheeting*



*Tubing and Sheeting can be continuous or perforated.

Keeping it CLEAN

Lindenmeyr Munroe offers a full range of cleaning equipment and supplies geared to meet the cleanliness, health and safety standards of your facility.

We specialize in servicing the following industries:

- Building Service Contractors
- Health Care
- Education
- Airports
- Manufacturing
- Food Processing
- Municipalities
- Automotive
- Hospitality

Paper

- Tissue
- Towels
- Wipers
- Napkins
- Dispensers



Chemicals

- Restroom Care
- Warewash
- Laundry
- General Cleaning
- Disinfecting



Sanitation

- Can Liners
- Waste Baskets
- Inside/Outside Waste Receptacles
- Tilt Trucks



Skin Care

- Soap
- Hand Sanitizer



Floors

- Finish
- Stripper
- Carpet Care
- Floor Pads



Mopping Equipment

- Wet Mops
- Dust Mops
- Microfiber
- Mop Buckets



Floor Equipment

- Vacuums
- Scrubbers
- Burnishers
- Extractors
- Service Department



Safety

- Gloves
- Wet Floor Signs
- Personal Protection Kits



Building Maintenance

- Janitor Carts
- Brooms/Brushes
- Bottles/Sprayers
- Dusters
- Window Cleaning



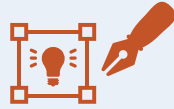
Are you looking to...

Reduce shipping costs?



Find cost-saving alternatives for interior and exterior packaging.

Improve branding?



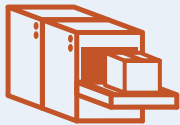
Create the perfect unboxing experience by enhancing the visual appeal through our graphics and design team.

Increase warehouse space?



Learn how VMI and JIT services can benefit the space in your warehouse.

Heighten throughput?



Discover packaging equipment and automation to increase operational efficiencies.

Minimize labor?



Reduce hours and operators with our lineup of packaging automation solutions.

Decrease spend?



Save by utilizing different materials and testing new designs.

Lessen your paperwork?



Your single source for all packaging equipment and materials, making your job a whole lot easier.

Be more unified?



Broad reach for better pricing, and product quality and consistency across all locations.

Offer eco-conscious solutions?



Packaging materials that offer durability with low environmental impact.

Strategic Packaging Solutions

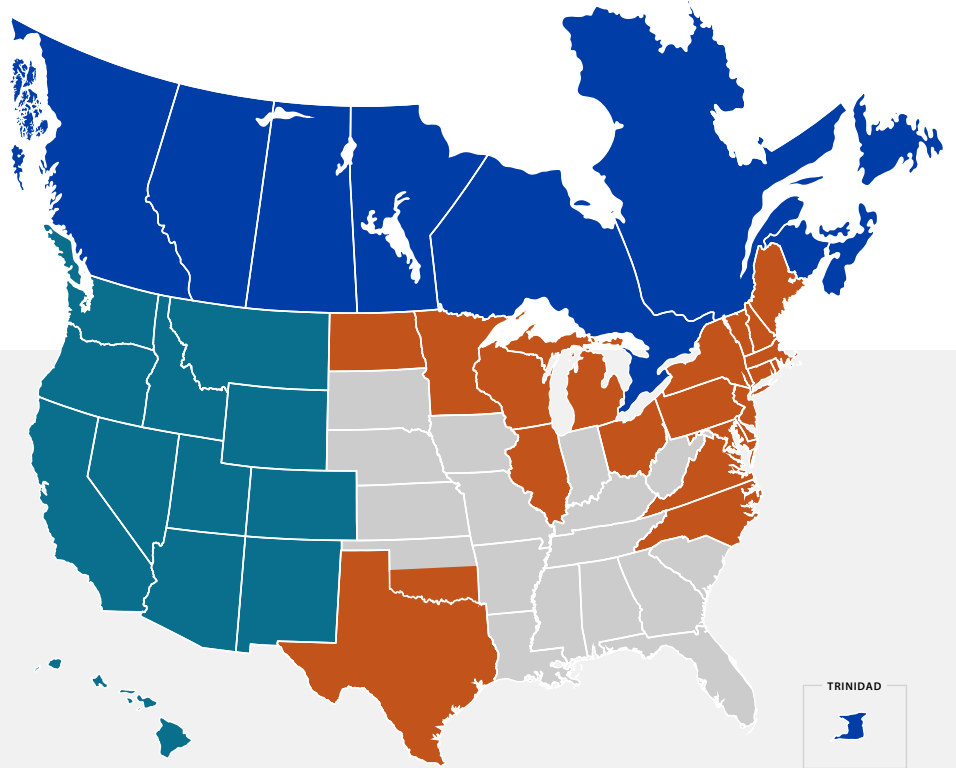
- Materials
- Design
- Equipment
- Robotics
- Automation
- Consultation
- Service

For more information, please contact your local Lindenmeyr Munroe packaging sales representative.

LindenmeyrMunroe.com

Central National Gottesman

NORTH AMERICAN
DISTRIBUTION
DIVISION



Kelly Spicers



Lindenmeyr Munroe



Spicers Canada

*Third party warehouses not included in the above map

Lindenmeyr Munroe Locations

WINDSOR, CT

800.842.8480

CAROL STREAM, IL

800.942.8817

PORTLAND, ME

800.442.1390

HANOVER, MD

800.494.3433

BELLINGHAM, MA

Wide Format Demo Room

800.343.7782

GRAND RAPIDS, MI

800.632.5930

ANN ARBOR, MI

800.632.5930

FRIDLEY, MN

877.634.0024

LONDONDERRY, NH

800.462.1911

TETERBORO, NJ

800.631.0193

TRENTON, NJ

Wide Format Customer

Experience Center

800.232.8333

CENTRAL ISLIP, NY

800.840.4555

LATHAM, NY

800.497.5111

ROCHESTER, NY

800.587.6223

CHARLOTTE, NC

980.246.8396

DURHAM, NC

800.523.8781

OKLAHOMA CITY, OK

405.449.9110

ALLENTOWN, PA

800.722.2325

KING OF PRUSSIA, PA

800.232.8333

MOUNT JOY, PA

800.222.4908

PITTSBURGH, PA

800.292.9664

AUSTIN, TX

Wide Format Customer

Experience Center

512.835.6795

DALLAS, TX

214.637.2220

EL PASO, TX

915.778.4441

HOUSTON, TX

713.868.1531

LONGVIEW, TX

903.757.9900

LUBBOCK, TX

806.762.4966

WACO, TX

254.752.5571

WILLISTON, VT

800.697.5111

COLONIAL HEIGHTS, VA

800.523.8781

PEWAUKEE, WI

800.242.0790

Lindenmeyr Express Store Locations

COLUMBIA, MD

301.937.4740

PITTSBURGH, PA

412.682.1407

DALLAS, TX

214.688.1060

FARMERS BRANCH, TX

972.239.6368

FORT WORTH, TX

817.429.4740

GARLAND, TX

214.343.6200

HOUSTON, TX

713.952.0900

RICHMOND, VA

804.354.9795

SPRINGFIELD, VA

Wide Format Demo Room

703.941.0810

VIRGINIA BEACH, VA

757.456.0234

Corporate Office

PURCHASE, NY

914.696.9000